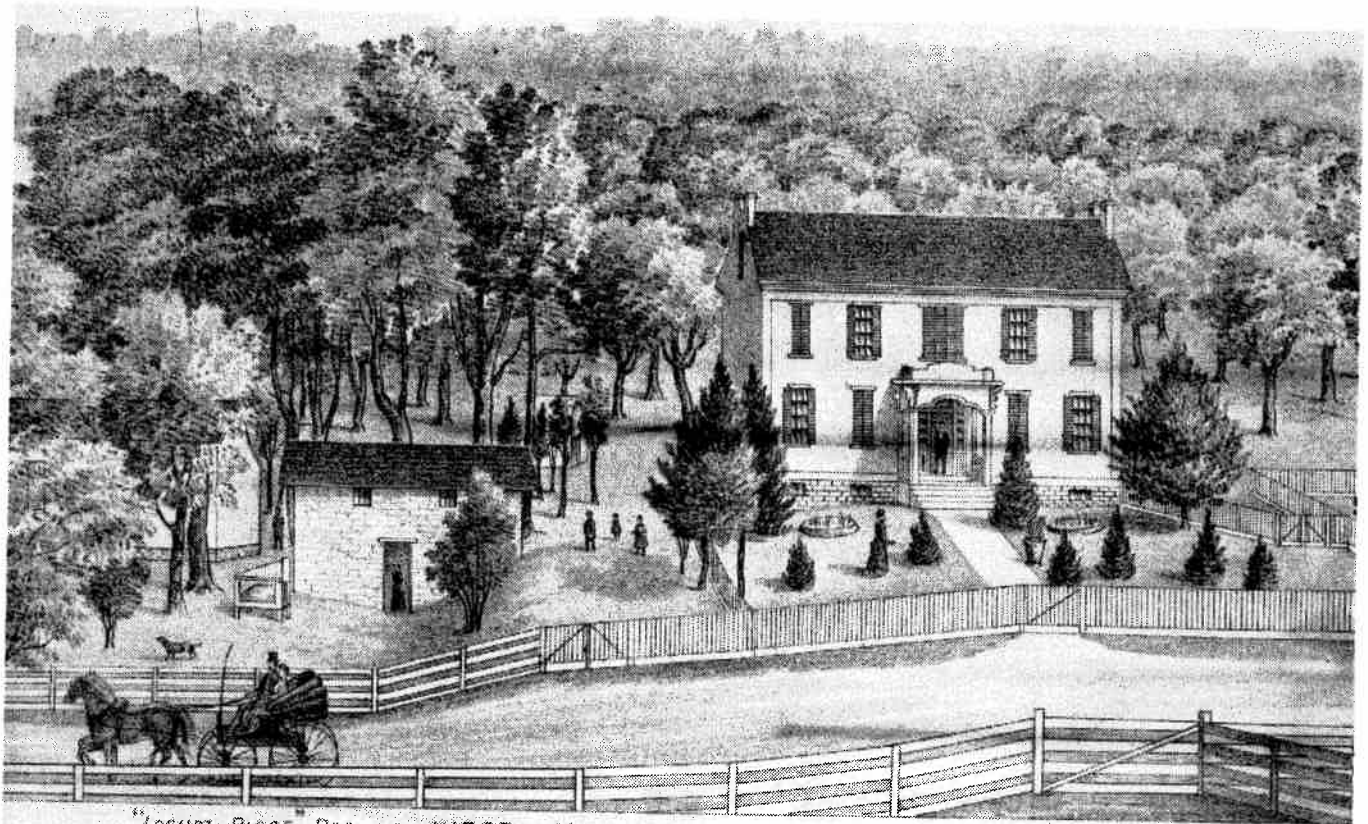


**Ellwood City's Bicentennial
Souvenir Booklet and Program**



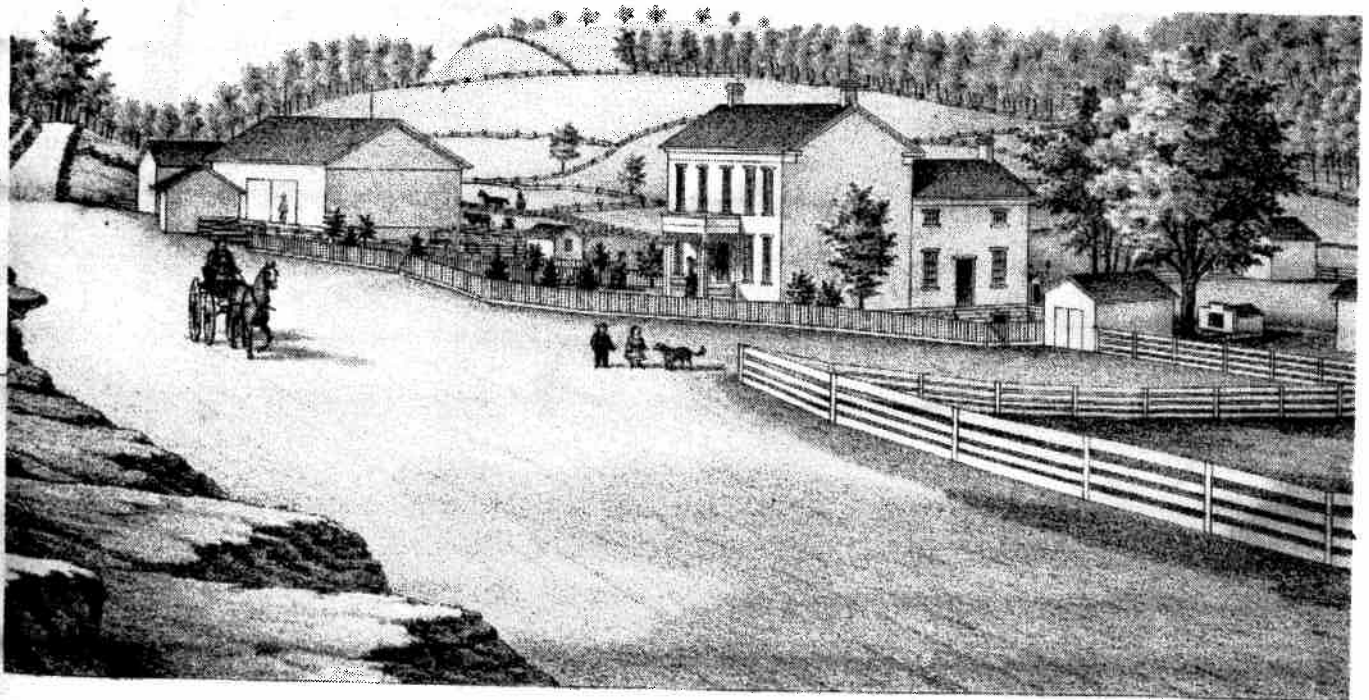
Presented by the Ellwood City Ledger in cooperation
with businesses, industries and organizations.



"LOCUST RIDGE," RES. OF JUDGE JOSEPH CUNNINGHAM, WAYNE TP, LAWRENCE CO., PA.

13 AREA GOLFERS have come to know this house, the homestead of the late Joseph Cun-

ningham in Wayne Twp. It is now the clubhouse for Del-Mar Golf Course. This is how it looked in 1877.

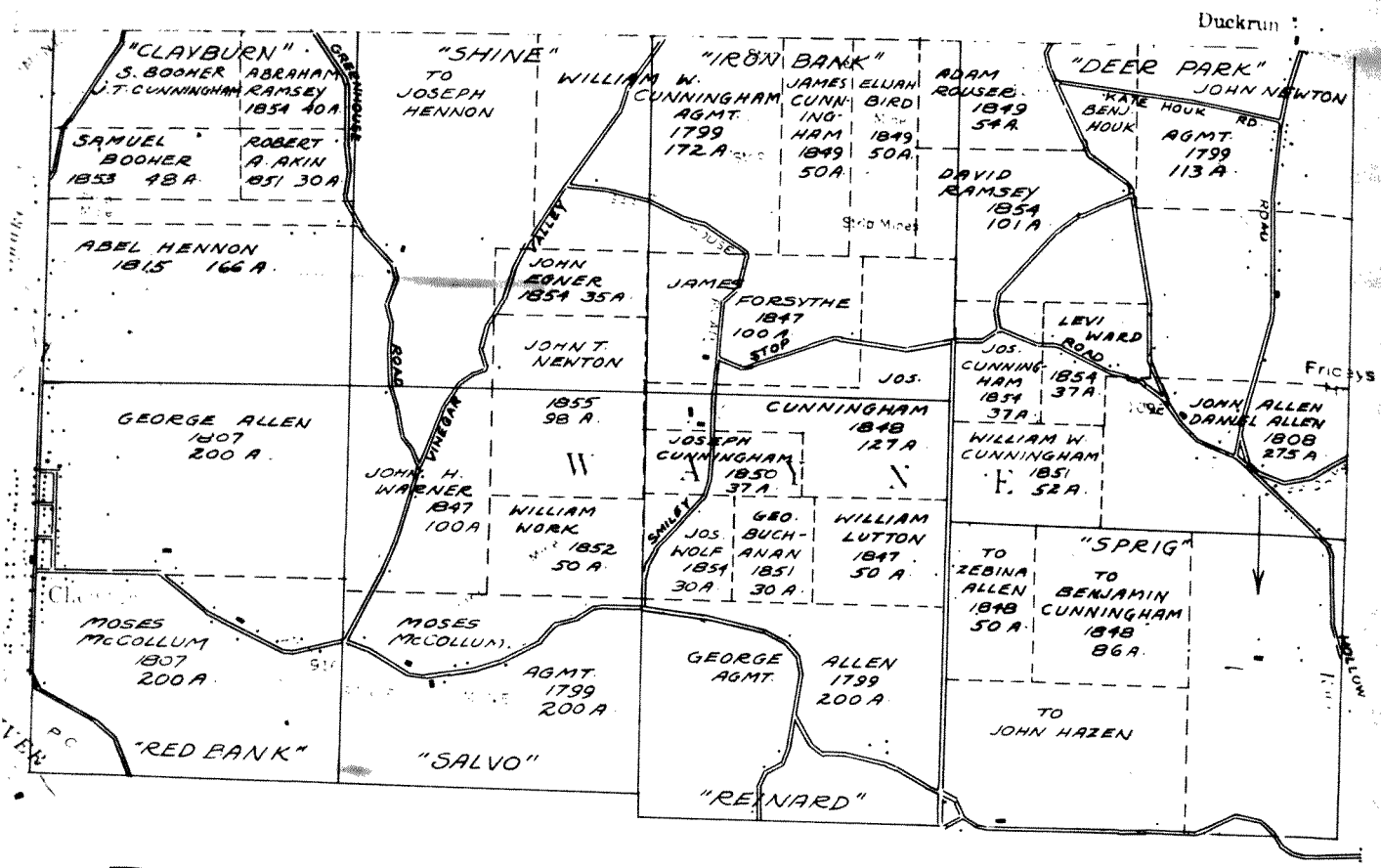


46 BUILT ABOUT 1849 according to the best calculations of its present occupant, David Mulhollen, this sturdy brick structure on the Old

Pittsburgh Rd. was the home of Martha Cunningham in 1877 when this picture was published in a history of Lawrence County.

This page sponsored through courtesy of:

Dom's IGA



Due north to Cunningham land by way of Bridge St. extension

What is known today as Bridge St. extension went due north from the Washington Academy lands into Cunningham land.

Benjamin and William Cunningham were among the first settlers in this territory in the 1790's. William settled on a 172-acre tract in what is now Wayne Twp. and Benjamin settled on a tract just north of it in what is now Shenango Twp. In later years other Cunninghams bought other land surrounding it.

Virtually all of "Iron Bank" where the Del-Mar Golf Course is now located was owned by the Cunninghams. William settled on part of "Iron Bank" and part of "Shine". James Cunningham bought 50 acres in "Iron Bank" in 1849. Joseph Cunningham bought 127 acres in "Iron Bank" and Reinard in 1848. 37 more acres in "Reinard" in 1850, and another 37 acres in adjoining "Samuel Baird" in 1854. Benjamin Cunningham bought 86 acres in "Sprig" in 1848. Joseph Cunningham also bought the 100-acre tract that James Forsythe purchased from the Chews in 1847 in "Iron Bank". Forsythe owned the property less than a year before selling it to Cunningham. The combined Joseph Cunningham properties extended from Bridge St. extension to

beyond Smiley Stop Rd. and Gas House Rd. on the west and north of Smiley Stop Rd. on the north. Del-Mar occupies only a part of the Joseph Cunningham land.

To the west were the Hennons. Joseph in "Shine" and Abel in "Clayburn" and to the south and west were George Allen and Moses McCollum. The Houks and Newtons were to the east as were John and Daniel Allen, who later sold to the Grandeys. John Hazen had a tract of about 100 acres that later passed into the Bird and Newton families.

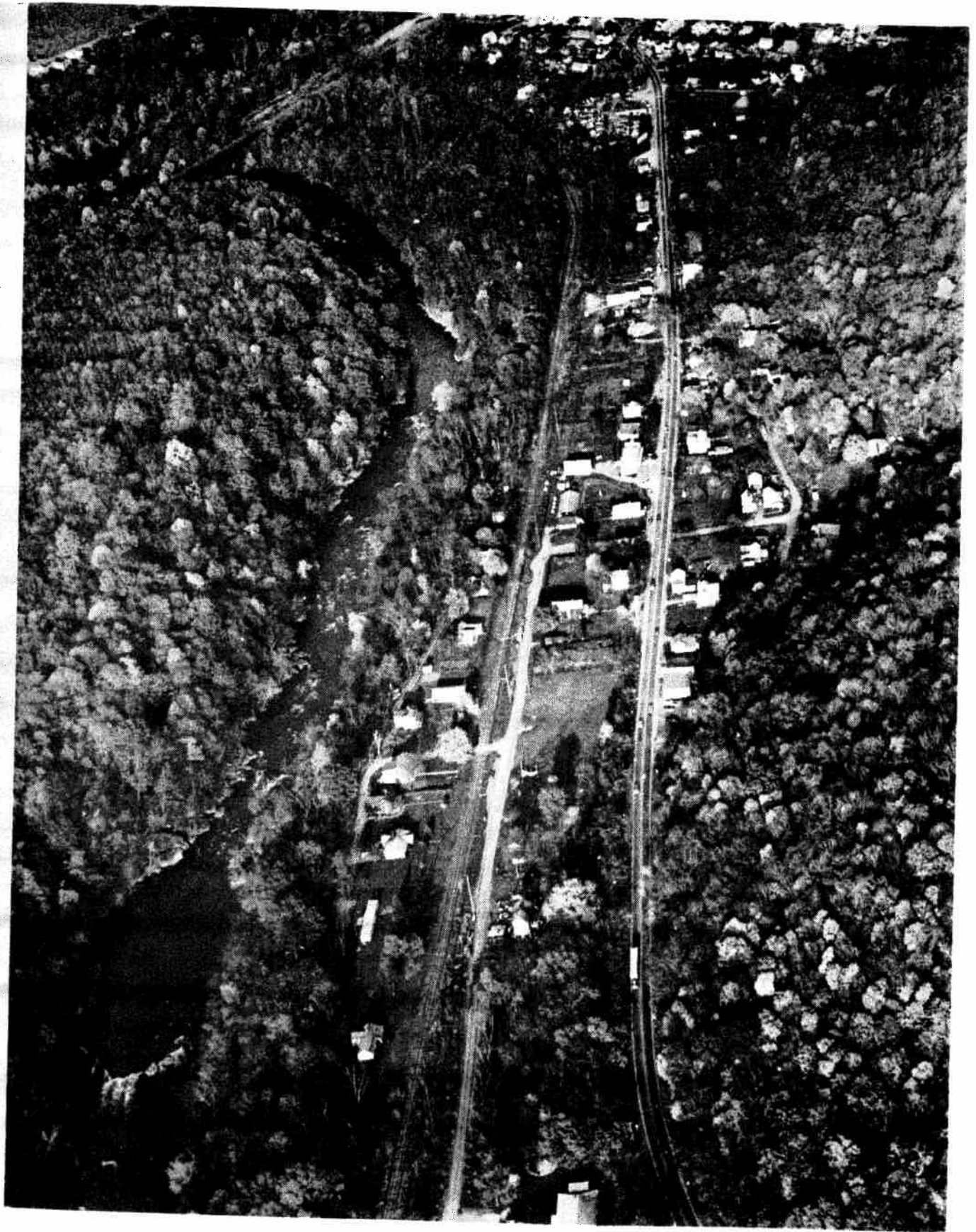
Other settlers in this section included Samuel Boomer, Robert A. Akin and Abraham Ramsey in "Clayburn". Elijah Bird in "Iron Bank", David Ramsey in "Iron Bank" and Deer Park", Adam Rouser in "Iron Bank" and Deer Park", Levi Ward in "Deer Park" and "Samuel Baird", Zebina Allen in "Sprig", William Lutton, George Buchanan and Joseph Wolfe in "Reinard", John Egner in "Shine", John T. Newton in "Shine" and "Salvo", John H. Warner in "Solvo" and William Work in "Sovo".

Zebina Allen sold 20 acres of his 50-acre tract to Joseph Cunningham five years after he purchased it.

This page sponsored through courtesy of:

Spoo's Ellport Fine Foods





56 **PARK GATE . . .** This aerial view shows how Park Gate is hemmed in by the hills on one

side and the Connoquenessing Creek on the other.

This page sponsored through courtesy of:
Babcock & Wilcox Tubular Products Division

Bought 249 acres from sheriff; laid out village of Park Gate

On Dec. 13, 1880, Sarah Johnston Hart, wife of John C. Hart of New Brighton, purchased 249 acres and 154.32 perches of land at a sale conducted by Beaver County Sheriff Mark Wisener of the property of Nancy Wilson, E. J. Wilson and R. V. Wilson, executors of the estate of Margaret Wilson.

The land lay in North Sewickley Twp. in Beaver County and Wayne Twp. in Lawrence County and was bounded as follows:

By the land of the Ramsey heirs and by Homewood Furnace land, to the bank of the Big Beaver Creek, up the creek to the canal bridge across the Connoquenessing Creek at its junction with the Big Beaver, across the bridge, up and including the Connoquenessing Creek, across the Connoquenessing by Washington heirs (Washington Academy land) and Cunningham's heirs, by Joseph Rouser's and F. J. Stritmater's.

The description places part of the land in "Morrison's Hunting Ground," one of the Washington Academy tracts.

James Wilson, who sold the same tract to Margaret and Nancy Wilson and Mrs. E. J. Wilson on Sept. 20, 1870, had secured the land in two tracts, one from Thomas Henry Sept. 5, 1843, and the other from Thomas Wilson June 24, 1836.

James Wilson sold the 249.96 acres for \$10,000 (\$40 an acre) and Mrs. Hart bought it for 6,298 (\$25.19 an acre).

On Oct. 18, 1884, the Harts sold 40.3 acres of the land to the New Brighton and New Castle Railroad for \$2,418.18 (\$60 an acre).

On Aug. 18, 1890, Matthew Skillen, apparently a representative of the Beaver and Ellwood Railroad Co., purchased another 20.5 acres from the Harts for \$5,125 (\$250 an acre).

On Nov. 14, 1891, three acres were sold to Dallas Main for \$400 (\$133.33 an acre) and in 1893 the sale of lots in the community of Park Gate got under way.

Thomas J. Rouzer bought an unnumbered lot on March 23, 1893, in the Beaver County section, Amanda Jane Baker of Clinton bought lots 46 and 47 in Wayne Twp. May 11, 1893, and on June 15, William McKim of Clinton bought Lots 11 and 12

in the North Sewickley Twp. section. On June 13, 1893, Thomas J. Rouzer bought another unnumbered lot in the North Sewickley Twp. section and James A. Sanford bought an acre to the south of the village.

Other early sales in the Wayne Twp. section included:

Jan. 9, 1895, Lot 44 to Carl R. Daellenbach. On Sept. 17, 1895, Daellenbach bought Lot 45, on June 26, 1896, he bought Lots 41, 42 and 43 and on Nov. 24, 1898, he bought Lots 31 and 32.

June 11, 1895, Lot 57 to Thomas F. Johnston and Jacob F. Corl.

Aug. 14, 1895, Lot 26 to Richard Welsh.

Oct. 23, 1895, Lot 49½ to F. N. Ehrheart.

Oct. 6, 1896, Lot 55 to Elizabeth Evans. On Aug. 9, 1897, Elizabeth Evans bought Lot 56.

Sept. 19, 1898, Lot 54 to Tenia Williams.

Aug. 5, 1899, Lot 30 to Tony Falcone.

June 11, 1895, portion of Lot 57 to Ruth Heckathorn.

July 5, 1898, Lot 50 to Bidwell L. Main. On Aug. 23, 1900, Main bought Lot 25.

Oct. 1, 1898, Lot 49, to Emmett D. Price.

In the Beaver County section Mrs. Ada McKim purchased an unnumbered lot June 22, 1895, Charles McKim Lot 13 on Dec. 22, 1898, R. J. McKim an unnumbered lot Aug. 26, 1903.

By the last sale, however, Sarah J. Hart had died and the land had descended to her son, Frank D. Hart.

Among the lots sold by Frank D. Hart were:

Feb. 26, 1904, Lot 28 to Ralph Vulp.

July 13, 1904, Lots 39 and 40 to Mrs. Nora Wilson.

Jan. 23, 1905, Lot 29 to Fernando Maggi.

April 15, 1905, Lot 48 to William Boswell.

Oct. 20, 1903, Lot 24 to R. J. McKim.

Then on Oct. 26, 1906, Henry W. Hartman, president of the Pittsburgh Co., bought Lots 1-10, 14-23, Lots 33-38, Lot 41½ and a 105-acre tract for \$19,005. The property was transferred to Dan H. Stone of Beaver the next day.

On Aug. 26, 1918, the heirs of Henry W. Hartman sold those lots and the 105 acres back to Frank D. Hart.

This page sponsored through courtesy of:

Benjamin's Rexall Pharmacy



62 CHEWTON was laid out by Benjamin Chew Jr. about the time the canal was built in the early 1830's.

This page sponsored through courtesy of:

Foster Furniture Co.
Steele Print Shop

M. Greenberg & Sons
Kildoo Agency

Keller's Department Store
Bruce & Merrilees Electric

Village of Chewton remains

The only venture of Benjamin Chew Jr. that still carries his name in this area in which he once owned over 30,000 acres is the village of Chewton on the western end of Wayne Twp. on the Beaver River.

Born in the days of the canal, altered greatly by the coming of the railroad and a residential community for nearly 150 years, Chewton has weathered the storms of change and development. It was here long before Wampum across the river or Ellwood City to its east.

Erected as a lasting monument to the Chews, it probably never fulfilled the expectations of its founders as a residential and commercial community. Although the canal that prompted its birth did bring commerce and helped in the development of mining and other industrial ventures it didn't bring great numbers of people to the area.

The town was laid out with the future in mind. The streets were wide and a public square was erected. To this day the square stands amid the buildings, mostly old now, as a reminder that this was one community that was planned. Efforts to find the real owners of the square by the township supervisors several years ago brought no tangible results. It is probably partially the property of the heirs of William H. Marshall who, in 1881 in partnership with Smith Conner, purchased all of the remaining Chew property in the Chewton area, including the unsold lots, what was known as the "Seven-acre" tract and the remainder of the "40-acre tract" to the north of the village.

The original plan of Chewton extended from the Beaver River to Oswald St. and from Anne St. to a street north of Anthony St. There were 227 lots in the plan.

Some of the earliest sales were to Thomas Riddle, Lot 54, on Joseph St. at Katherine St., Oct. 28, 1833, to John T. Cunningham, Lot 153, on Canal St., at the river on Sept. 4, 1834, to James Cunningham, Lot 189, on Oswald St., Dec. 10, 1834, to John T. Cunningham, Lot 24, on Eliza St., Aug. 20, 1836, to Samuel Stiles, Lot 107, on Chew St., Dec. 28, 1837, and to John Motheral, Lots 16, 17, 18, 19, 20 and 21, on Oswald St. May 24, 1838.

Lots 150 and 151 on Canal St. may have been the first lots sold in the village. According to an indenture at the Lawrence County Courthouse dated April 5, 1859, and filed Aug. 8, 1917, Jacob Allen purchased those two lots on Aug. 3, 1831, from Chew. That deed from the heirs of Benjamin Chew Jr. to Eleanor Allen stated that of the \$100 original cost, \$21.36 had been paid by Allen on Feb. 5, 1834, and the remainder, including accrued interest, totalling \$153.64 was paid in a settlement on Oct. 4, 1847, between Chew and John M. Allen and Joseph G. Allen. On March 18, 1850, John M. Allen and his wife Esther, Zebina N. Allen and his wife Margana, J.

Davis Allen and his wife Mary, Joseph G. Allen, David Clark and his wife Susanna and Daniel M. Allen and his wife Sarah, all heirs at law of Jacob Allen, released forever their claim to the property to Eleanor Allen, to whom the lots were deeded.

Some lots were sold through articles of agreement at much earlier dates than when the actual transactions were indentured at the courthouse. William Kirkland bought lots 156 and 157 on Mill St. and Anne St. on Nov. 5, 1878, under articles of agreement of 1839.

In some instances those who purchased lots on agreement, later sold them to others without having made full payment to the Chews and the later owners had to pay off the difference to gain full title, if the other seller happened to be deceased which was sometimes the case.

About 40 lots were sold by the Chews before the remainder was disposed of to Marshall and Conner in 1881. Marshall and Conner sold about 24 acres before Conner dropped out and Philip Fisher and William Kirkland joined in 1889.

After that there were various combinations involved with William H. Marshall and his wife Emma. In 1890 J. N. Fallis and Frank Zeiger were a part of the concern selling lots. In 1893 Zeiger was out, but Samuel W. Dana and Scott D. Long were in. In 1898 Sarah L. Fisher was in for her deceased husband and in 1903 the heirs of William O. Kirkland replaced him.

By 1916, Dana and Long remained but the widows or heirs of Fisher, Fallis, Kirkland and Marshall were selling lots.

The various combinations sold about 71 additional lots up to June 30, 1920.

Among the sales in 1881 was a right-of-way for the Pittsburgh and Chicago Railroad, and two grants to the New York, Pittsburgh, and Chicago Railway. On June 9, 1884, another .78 acres were sold to the New York, Pittsburgh and Chicago, on Dec. 7, 1899, three more sections of land to the Pittsburgh & Western Railroad, including 30 building lots, on Feb. 7, 1899, two more sections to the P&W, and on Feb. 1, 1900, four more sections to the P&W.

On May 12, 1902, an 18.42-acre section, the entire northwestern part of the original plan, was sold to Nick and Anna Burik.

In 1870 John Egner laid out a number of lots to the east of Chew's plan, north of the Chewton-Wurtemberg Rd. This plot included nine blocks of three lots to a block. Block 1 was sold to Smith Conner, Block 2 to William Sim, Block 3 to Joseph Wolf, Block 4 to Johnston Jones, Block 5 to Cowden Craven, Block 6 to David Stains, Blocks 7 and 8 to W. G. Hennon and Block 9 to Jacob Allen.

In 1924, John McCollum laid out 22 lots east of Chews plan and south of the Chewton-Wurtemberg Rd.

This page sponsored through courtesy of:

Nido's Beauty Salon

Helen's Dress Shop

Carney's Auto Service

The Cecelia Shop

Vicari's Restaurant

A. P. Folino Realty Co.

PARK AVENUE

428 FIRST ME CHURCH 1894 \$300	424 M.M.W. SHULTZ 1901 \$975	423 GIUSEPPE ROCCALUMBO 80 1917 \$1,345	422 STANDARD ENG. 1911	421	420
427					
426 NILBUR J HARRIS 1902 \$500					
425 JOHN S. STERLING 1901 \$550					

437 M.W. SHULTZ 1900 \$685	438	439 BESSIE 1911 \$215	440 SAMUEL JACOBSON 1916 \$550	441 DOMENICO ROCCO 1916 \$1,500	442	443	444 FRANK ROCCO JR 1916 \$500	445 STANDARD ENG 1917 \$500	446 STANDARD ENG CO. 1911	447	448
----------------------------------	-----	-----------------------------	--------------------------------------	---------------------------------------	-----	-----	-------------------------------------	-----------------------------------	---------------------------------	-----	-----

WAYNE AVE.

1274 MARY R. PHILLIS 1899 \$1,700	1275	1276 DAVID WILLIAMS 1914 \$600	1277 DAVID CARTWRIGHT 1916 \$600	1278 F.C. IMPROVEMENT CO. 1903	1279 S.J. CHARLSTLEY 1916 \$550	1280 RACHEL SHULTZ 1895 \$1,400	1281 GERMAN LUTHERAN 1919 \$500	1282 FIRST EVANG. CHURCH 1894	1283 STANDARD ENG. CO. 1911	1284	1285
---	------	--------------------------------------	--	--------------------------------------	---------------------------------------	---------------------------------------	---------------------------------------	-------------------------------------	-----------------------------------	------	------

BIRCH WAY

1321 ROSA S. ROCCO 1901 \$425	1320 MIKE CREATURA 1913 \$2,900	1319 ALESSIO MASSINI 1916 \$650	1318 F.C. IMPROVEMENT CO.	1317 GIUSEPPE CARONE 1916 \$650	1316 F.C. IMPROVEMENT CO. 1903	1315 PIETRO SOFIA 1916 \$650	1314 F.C. IMPROVEMENT CO. 1903	1313 ROSA DENOME 1919 \$650	1312 F.C. IMPROVEMENT CO. 1903	1311 NICOLA NEVE 1916 \$650	1310 F.C. IMPROVEMENT CO. 1903
-------------------------------------	---------------------------------------	---------------------------------------	---------------------------------	---------------------------------------	--------------------------------------	------------------------------------	--------------------------------------	-----------------------------------	--------------------------------------	-----------------------------------	--------------------------------------

FRANKLIN AVENUE

1387 LOUIA M. KELLER 1898 \$375	1388 JOHN W. KELLER 1905 \$375	1389 LOUIS DECARBO 1906 \$1,550	1390 THERESA	1391 DECARBO 1909 \$1,700	1392	1393 ROSA FRANK SPADOL 1919 \$650	1394 JOHN McDONALD 1893 \$400	1395 JOSEPH FRISK 1922	1396 JOHN RADEK 1901 \$375	1397 FREDERICK MILLER 1892 \$400	1398 GADON RADEK 1904 \$400
---------------------------------------	--------------------------------------	---------------------------------------	-----------------	---------------------------------	------	---	-------------------------------------	------------------------------	----------------------------------	--	-----------------------------------

MAPLE WAY

1456 PASQUALE PAVLIA 1913 \$600	1455 ANTONIO LASSO 1913 \$500	1454 ANTONIO LASSO 1907 \$1,000	1453 GEORGE MATZA 1913 \$450	1452 GEORGE MARZET 1918 \$475	1451 SAM PANICO 1923	1450 FRANK SANZO JAMES DECARO 1922	1449 ANTONIO PERTILLO 1918 \$500	1448 DOMENICO TERACE 1918	1447 F.C. IMPROVEMENT CO. 1903	1446	1445
---------------------------------------	-------------------------------------	---------------------------------------	------------------------------------	-------------------------------------	----------------------------	---	--	---------------------------------	--------------------------------------	------	------

DIVISION AVENUE

1309 ST. PAUL R. S. BARNUM 1896 \$260 1924	1308 F.W. FLINLER 1914 \$2,500	1307 JANUARY FRISK 1916 \$550	1306 F.C. IMPROVEMENT CO. 1903	1305 PAOLA FERASCETTI 1916 \$600	1304 MARY BAIR 1894 \$400	1303 JOSEPH ROBINO 1915 \$600	1302 F.C. IMPROVEMENT CO. 1903	1301 RAFAELE PROSPERINI 1917 \$250	1300 F.C. IMPROVEMENT CO. 1903	1299 JOE ROBINO 1910 \$500	1298 JAMES M. MERRIDIA 1893 \$500
--	--------------------------------------	-------------------------------------	--------------------------------------	--	---------------------------------	-------------------------------------	--------------------------------------	--	--------------------------------------	----------------------------------	---

1409 F.C. IMPROVEMENT CO. 1903	1400	1401 G.H. SCHEIDEMANLE 1892 \$400	1402 ALFONSO BARBATTI 1919 \$650	1403 LESLAND WARDNER 1895 \$400	1404 JAMES DEMAURO 1918 \$2,350	1405	1406 DAVID CARTWRIGHT 1910	1407 EMMA WHITE 1903 \$4,500	1408	1409 DAVID CARTWRIGHT 1910	1410 J.C. GRANDY 1911 \$500
--------------------------------------	------	---	--	---------------------------------------	---------------------------------------	------	----------------------------------	------------------------------------	------	----------------------------------	-----------------------------------

1444 F.C. IMPROVEMENT CO. 1903	1443	1442	1441 WILLIAM WEIGLE 1897 \$400	1440 PIETRO ZITTELLO 1916 \$500	1439 RAFAELE VERDILLO 1917 \$500	1438 SALFERRIO FOIGNI 1916 \$450	1437 LETA A. CEAR 1894 \$400	1436 PETER GOTTFRID 1906 \$400	1435 LUIGI VENDRELLA 1916 \$450	1434 JOE ROBINO 1915 \$450	1433 FRANK MONICA 1911 \$500
--------------------------------------	------	------	--------------------------------------	---------------------------------------	--	--	------------------------------------	--------------------------------------	---------------------------------------	----------------------------------	------------------------------------

STREET

FOURTH STREET

THIRD STREET

STREET

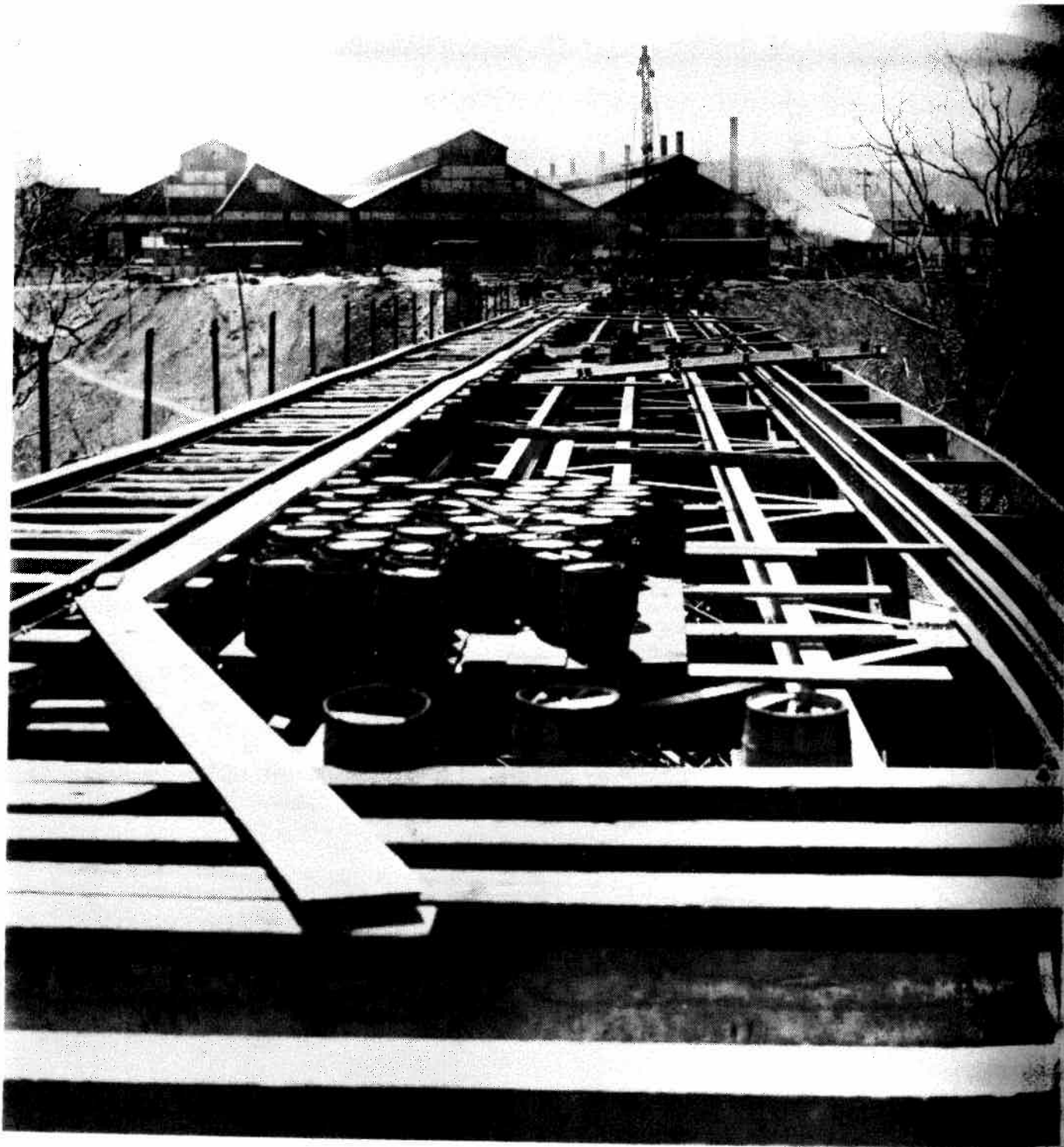
SECOND STREET

40 THE NEARNESS of an industrial plant didn't deter property buyers in this section of the

city. In fact, most of the lots were bought after the Standard Engineering Co. purchased the large square in the top right.

This page sponsored through courtesy of:

Aetna-Standard Engineering Co.



STREET

FOURTH

PASQUALE PAVLIN
LOUISA M. KELLER
ROSA S. ROCCO
MARY E. PHILLIS
W. J. SMITH

BUILDING A BRIDGE . . . Shelby Land Co. built a bridge across the Connoquenessing Creek in 1919 when it built its Ewing Park addition.

The Wilsons sold the Weils tracts of 137.37714 and 0.4439 acres in the area just east of Frisco June 14, 1945, for \$20,000 (about \$145 an acre). The sale was from John S. Wilson, Raymond R. and Edna S. Wilson, Karl E. and Ida G. Eicholtz, Loyal W. and Sylvia Mae Wilson and Omar L. and Ella May Wilson to W. Walter and Eva M. Weil and Wilson H. Weil.

William H. and Anna B. Goehring of Marion Twp. sold Ellwood H. and Grace W. McClelland of Pittsburgh 3.23 acres of land in Marion Twp. on March 12, 1940, that had formerly been used for right of way and siding by the Pittsburgh, Harmony, Butler and New Castle Railway at Eckhart Stop.

This page sponsored through courtesy of:

Townsend Textron